

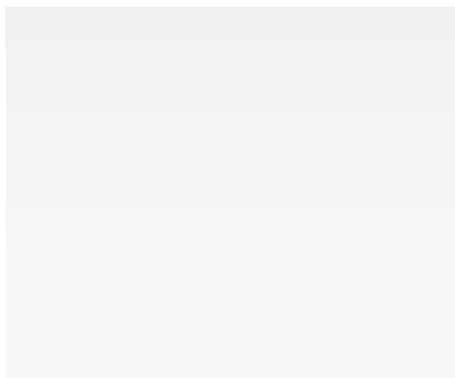
EN

LIGHT MOBILE ARM SUCTION HOSE REEL



ACCESSORIES AND COMPONENTS

Suction hose reel



COMPANY WITH
QUALITY SYSTEM
CERTIFIED BY DNV GL
= ISO 9001 =

COMPANY WITH
ENVIRONMENTAL SYSTEM
CERTIFIED BY DNV GL
= ISO 14001 =

COMPANY WITH
QUALITY SYSTEM
CERTIFIED BY DNV GL
= UNI EN ISO 3834-2 =

TECHNICAL DATA

The light mobile arm suction hose reel is an accessory designed and sized to be incorporated into machines equipped with tanks for the suction of sludge (or similar fluids) from road gullies. The suction is created by vacuum inside the tank (e.g. drainage vehicles).

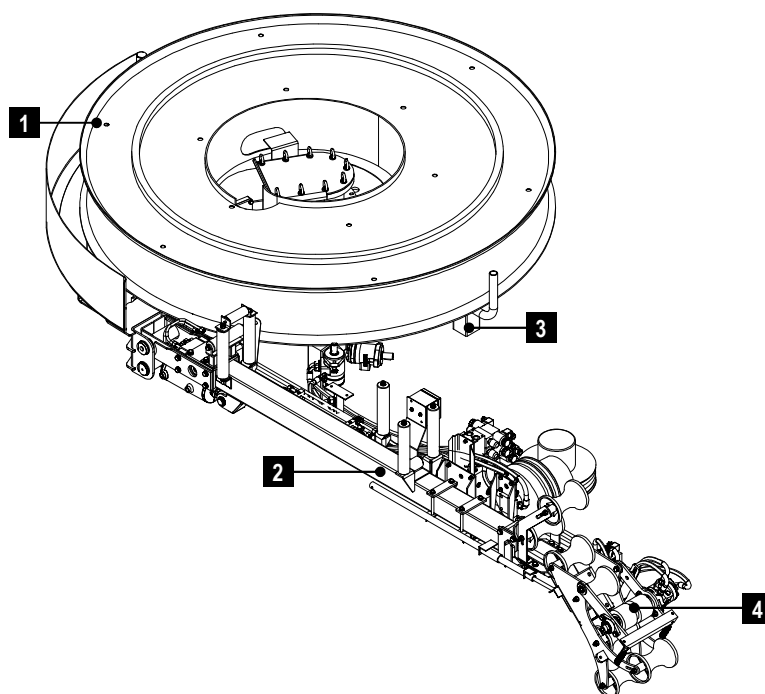
The suction hose reel allows simplifying the operator's work by nearing the hose to the workplace.

The light mobile arm suction hose reel is normally installed on the upper part of the tank. It consists of a D=1960 mm metal drum, which stores the suction hose (rubber hose with metal spiral) and is equipped with a telescopic arm. The entire assembly is designed to rotate (within a maximum limit of 300°) around its rotation axis. The telescopic arm has a maximum extension of 1450 mm.

The light mobile arm suction hose reel is available in the following two versions:

- **Light mobile arm suction hose reel DN80**, code 13072 016 E0, made of stainless steel, which can contain **40m** DN80 hose;
- **Light mobile arm suction hose reel DN100**, code 13072 011 E0, made of stainless steel, which can contain **25m** DN100 hose;
- **Light mobile arm suction hose reel DN120**, code 13072 033 E0, made of stainless steel, which can contain **20m** DN120 hose.

The figure below shows a schematic view of the light mobile arm suction hose reel, identifying its main components.



LEGEND

1	Metal drum	3	Support frame
2	Mobile telescopic arm	4	Hose winding rubber roller

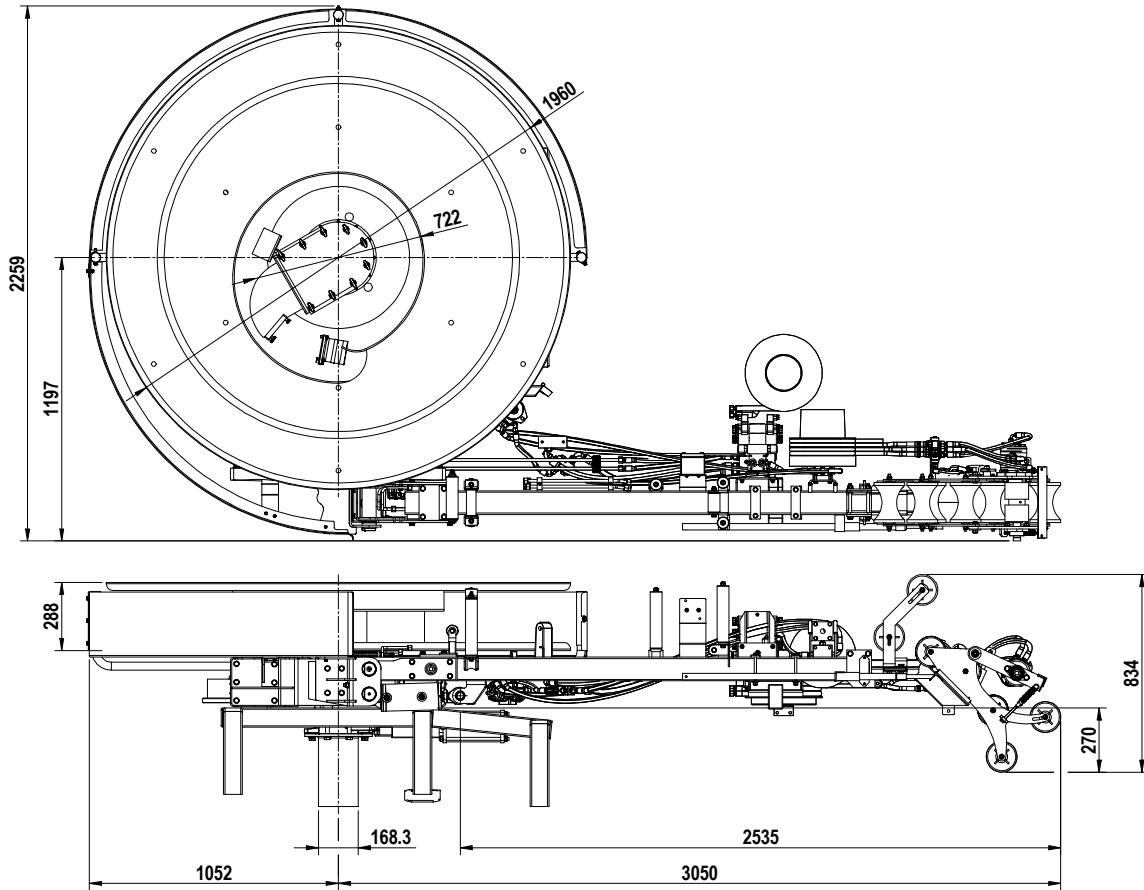
The following table shows the main operating parameters concerning hydraulic pressure and flow rate, hydraulic motor rotation speed, supply voltage and weight.

OPERATING PARAMETERS

MAX INLET HYDRAULIC PRESSURE	150 bar
MAX HYDRAULIC FLOW RATE	17-25 l/min
MOTOR REVS	0 : 300 revs/min
PNEUMATIC PRESSURE	3.5 – 7 Kg/cm ²
VOLTAGE	24 V (single reel power consumption: 2.5A)
WEIGHT	1200 Kg

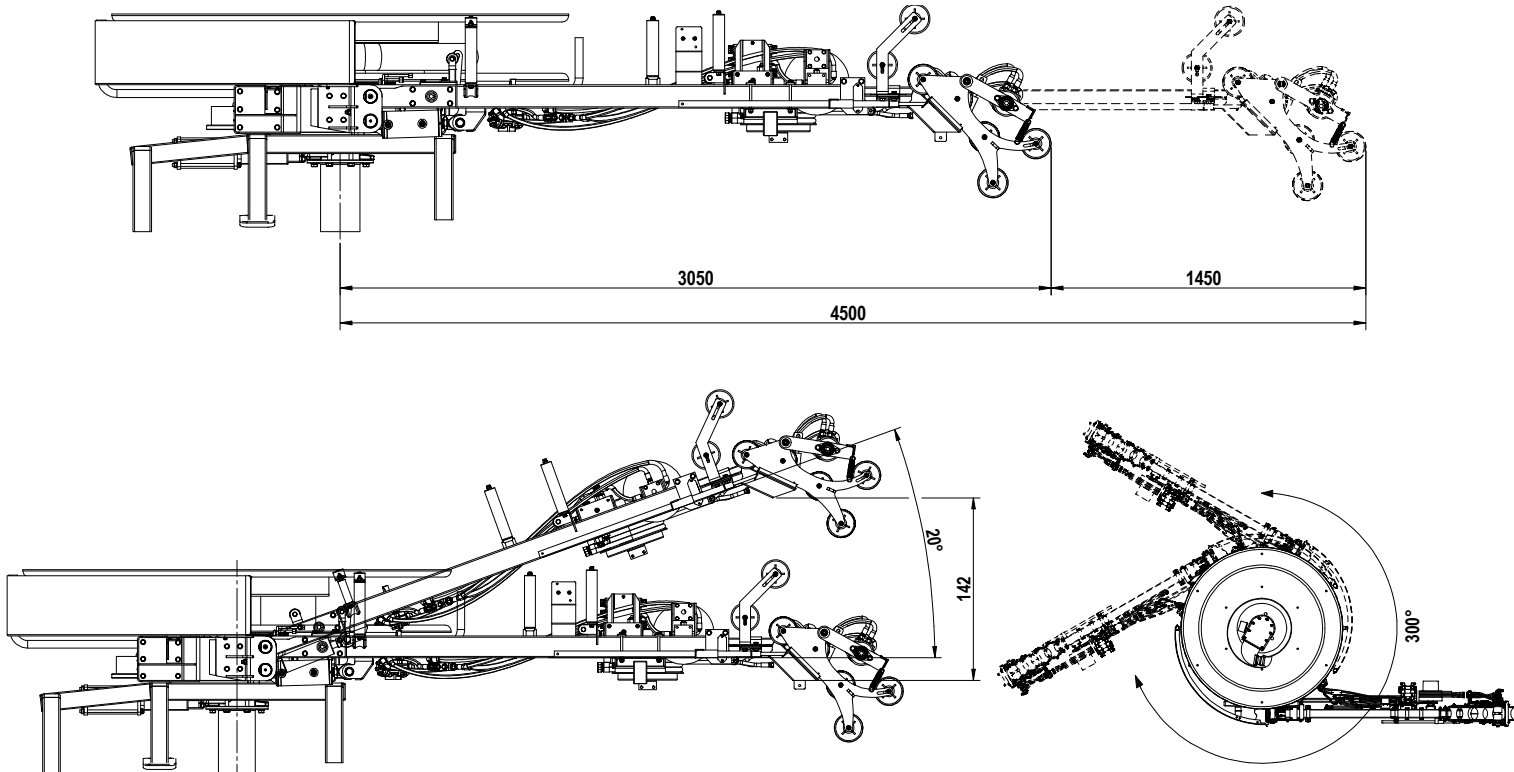
Note: the data above concerning weight refer to the suction hose reel without the wound hose.

Light mobile arm suction hose reel dimensions



Light mobile arm suction hose reel functional characteristics

The light mobile arm suction hose reel has a telescopic arm extension up to 1450mm and a maximum rotation of 300°.



MATERIALS

1. The drum is made of Aisi304 stainless steel.
2. The telescopic arm is made of S235JR mild steel.
3. The base is made of Aisi304 stainless steel.
4. The hose guide rollers are made of plastic material.

